

IP-100 iPod™ Connection Kit



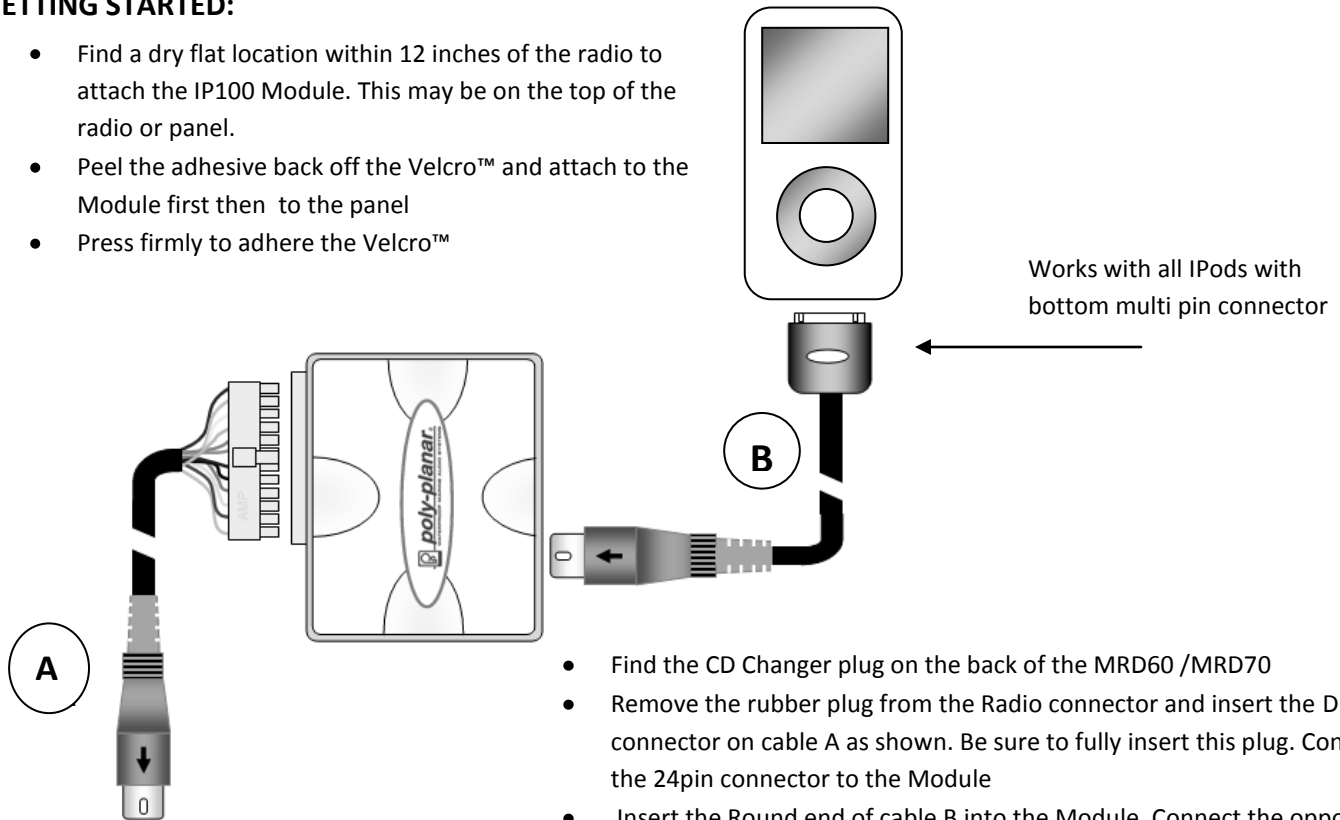
Installation Instructions

IMPORTANT! Before installing these components disconnect the Poly Planar MRD60 / MRD70 Power connection. This is the white plastic 12 pin plug on the back of the radio. Reconnect when all work has been completed

IMPORTANT! These components are not waterproof. The control module must be mounted in a dry location.

GETTING STARTED:

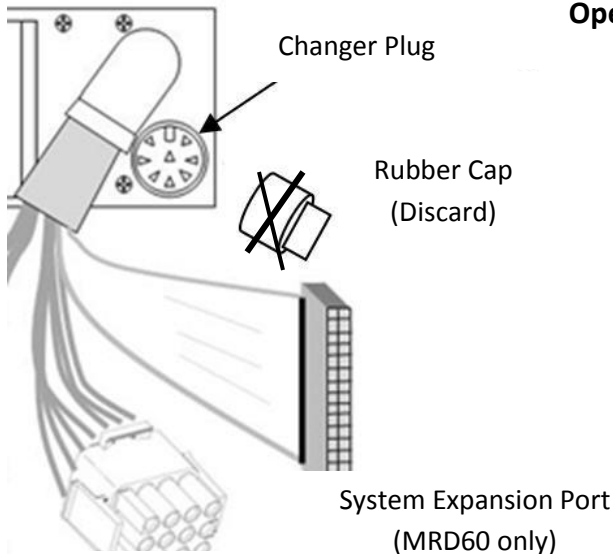
- Find a dry flat location within 12 inches of the radio to attach the IP100 Module. This may be on the top of the radio or panel.
- Peel the adhesive back off the Velcro™ and attach to the Module first then to the panel
- Press firmly to adhere the Velcro™



- Find the CD Changer plug on the back of the MRD60 /MRD70
- Remove the rubber plug from the Radio connector and insert the DIN connector on cable A as shown. Be sure to fully insert this plug. Connect the 24pin connector to the Module
- Insert the Round end of cable B into the Module. Connect the opposite end to your iPod.

Operation:

- With the radio on, use the source button to toggle to CD Changer.
- If Display shows “No Disc Loaded” check connections
- Following normal iPod protocol select a Playlist or Category
- The IP100 will play up to 99 tracks from a Playlist or Category.
- Use the Tune ^ (Up) or TUNE v (Down) to change tracks.
- The IP100 charges the iPod battery whenever the unit is attached to the system. Even when not using it as the source.
- Scan, Random, Repeat and Pause functions are usable in this mode. Check your radio Manual for more information on these functions.



Power and Speaker Connection